

The background of the slide is a close-up, slightly blurred image of the American flag, showing the stars and stripes. In the lower right quadrant, there is a small, golden-colored figurine of a castle or fortress with two towers and a central archway.

*ROCK ISLAND DISTRICT
EMERGENCY MANAGEMENT
FLOOD BRIEFING APPLICATION*

BY

KEVIN E. R. CARLOCK

*GEOGRAPHER, OPERATIONS DIVISION – TECHNICAL SUPPORT BRANCH
ROCK ISLAND DISTRICT*

AUGUST 18, 2004



US Army Corps
of Engineers®
Mississippi Valley Division



Topics

- **Overview of Flood Brief Application**
- **Briefing Site Functionality**
- **Management Site Functionality**
- **Future Development**

One Corps Serving The Army and The Nation



US Army Corps
of Engineers®
Mississippi Valley Division



Flood Brief Overview

- Present “Big Picture” View of the Event
- Provide Up-To-The-Minute Information to the Crisis Management Team (CMT)
- Disseminate Information from the Field to CMT
- Assemble Essential Elements of Information for EngLink Situation Reports
- Big Picture View of District Status
- Allow for In depth View of Event Details
- Save and Archive Event Information in Oracle Database



Main Briefing Page

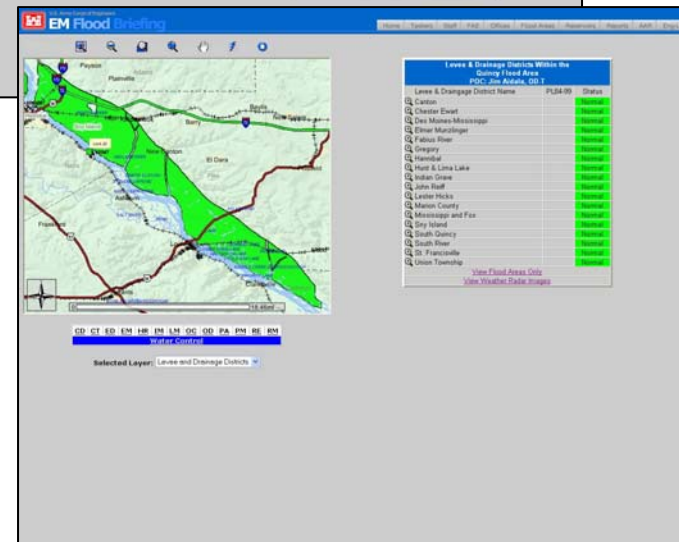
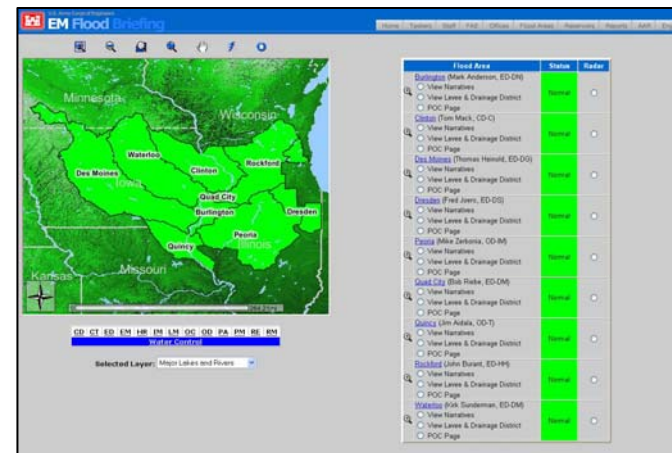
- **Interactive Map Server**
 - Flood Area Status
 - Navigation Tools
- **Status Overviews and Links**
 - Flood Areas
 - District Offices
 - Water Control
- **Links**
 - Taskers
 - Staff Directory
 - Flood Area Engineers
 - Reports
 - After Action Reviews
 - EngLink
- **NWS Radar Links**

<http://mvrgris.mvr.usace.army.mil/em/floodbrief>



Flood Area Pages

- Flood Area Status
 - Zoom to Flood Area Extent
 - View Narratives
 - View Levee and Drainage District Status
 - Link to Flood Area Web Pages
- Levee and Drainage District Status
 - Zoom to Levee – Drainage District





Water Control Pages

- Water Control Topics
 - Weather Conditions and Forecasts
 - Current Water Levels
 - Reservoir Conditions

The screenshots illustrate the EM Flood Briefing software interface, which provides comprehensive water control data. The top screenshot shows a national map with a panel for 'View Water Control Binding Leases' listing various leases and their current status. The middle screenshot displays a detailed map of the Mississippi River basin with a 'Current Water Levels' table listing station titles, flood stages, and 24-hour trends. The bottom screenshot shows a line graph for 'Lake Red Rock' with a 'View Water Control Binding Leases' panel, providing a visual representation of water levels over time.

STATION TITLE	FLOOD STAGE	CURRENT STAGE	24hr CHANGE	24 hour TREND
Mississippi River at Chicago Locks,MO	13	7.25	53.29	Increasing
Mississippi River at Lock and Dam 20, Illinois,MO	14	1.06	53.29	Steady
Mississippi River at Casey St, Illinois,IL	17	11.38	53.29	Steady
Mississippi River at Lock and Dam 21, Illinois,IL	17	1.01	53.29	Steady
Mississippi River at Hannibal,MO	18	11.01	53.29	Steady
Mississippi River at Lock and Dam 22, Illinois,IL	16	1.01	53.29	Steady
Fox River near Wayne,IL	15	1.01	53.29	Steady
Wyanonah River near Canton,MO	18	1.01	53.29	Steady
North Fork River at Mendon,MO	17	1.01	53.29	Steady
North Fork River near Mendon,MO	13	1.01	53.29	Steady
North Fork River near Mendon,MO	13	1.01	53.29	Steady



Links to RiverGages.com

- Access Complete Gage Data
 - From Water Levels Pages
 - Links from Gauge Locations on Map

<http://www.RiverGages.com>

The screenshot displays the RiverGages.com website interface. On the left, a map shows the Mississippi River and surrounding areas with various gauge locations marked. The main content area is titled "RiverGages.com - Station Information For Mississippi River at Quincy, IL". It provides detailed information for the "Mississippi River at Quincy II" gauge, including its elevation (458.59 Ft. NGVD 1912), flood stage (-17 Ft.), and record high stage (32.13 Ft. on 07/13/1993). The site also offers a "Latest Data" section with a table of current and forecasted water levels, and a "Daily Historic Data" section with a calendar view for selecting specific dates and years.

Latest Data	
08/11/2004 12:00	
Latest Stage	11.39 Ft.
24 Hr. Change	40.32 Ft.
Tomorrow's Forecast (based 08/11/2004 10:12)	11.30 Ft.
Last Year's Stage	11.40 Ft.
Today's Historic Normal Stage	11.66 Ft.
24 Hr. Precip. Total	0.00 in.



US Army Corps
of Engineers®
Mississippi Valley Division



Management Site

- **Input Briefing Data**
- **Data Stored in Oracle Tables**
- **Main Briefing Site Automatically Updated**

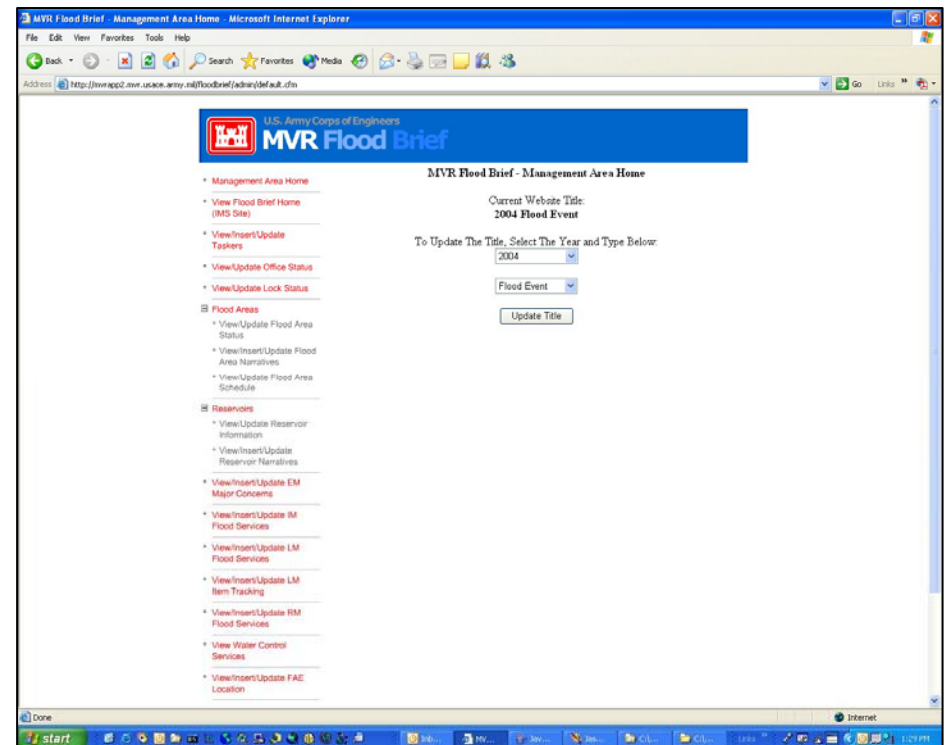
<http://mvrapp2.mvr.usace.army.mil/floodbrief/admin/default.cfm>

One Corps Serving The Army and The Nation



Management Site

- Management Site Controls
- Information Displayed on the Briefing Pages
- Status Updates and Data Entry
 - Flood Area Status
 - Levee Status
 - Lock Status
 - Flood Fighting Resources
 - Narratives and Photos
 - Funding Status
- Updated Daily or as Required
- All Entries Archived in Oracle





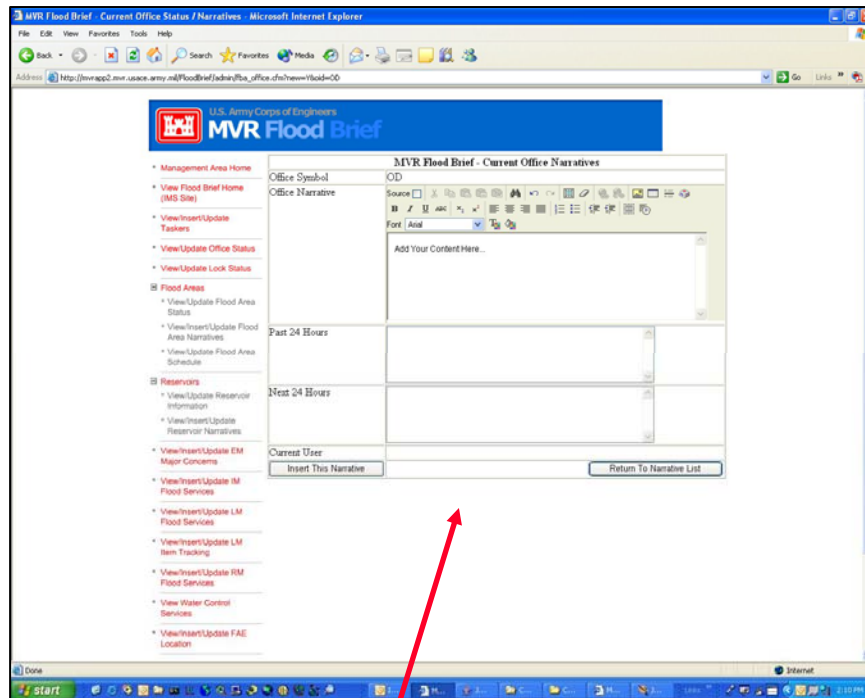
Office Name	Normal	Moderate	Serious
Construction	<input type="radio"/>	<input type="radio"/>	<input type="radio"/>
Contracting	<input type="radio"/>	<input type="radio"/>	<input type="radio"/>
Emergency Management	<input type="radio"/>	<input type="radio"/>	<input type="radio"/>
Engineering	<input type="radio"/>	<input type="radio"/>	<input type="radio"/>
Human Resources	<input type="radio"/>	<input type="radio"/>	<input type="radio"/>
Information Management	<input type="radio"/>	<input type="radio"/>	<input type="radio"/>
Logistics	<input type="radio"/>	<input type="radio"/>	<input type="radio"/>
Office of Counsel	<input type="radio"/>	<input type="radio"/>	<input type="radio"/>
Operations	<input type="radio"/>	<input type="radio"/>	<input type="radio"/>
Planning & Program Management	<input type="radio"/>	<input type="radio"/>	<input type="radio"/>
Public Affairs	<input type="radio"/>	<input type="radio"/>	<input type="radio"/>
Real Estate	<input type="radio"/>	<input type="radio"/>	<input type="radio"/>
Resource Management	<input type="radio"/>	<input type="radio"/>	<input type="radio"/>

District Office Status Changes Entered in Management Page

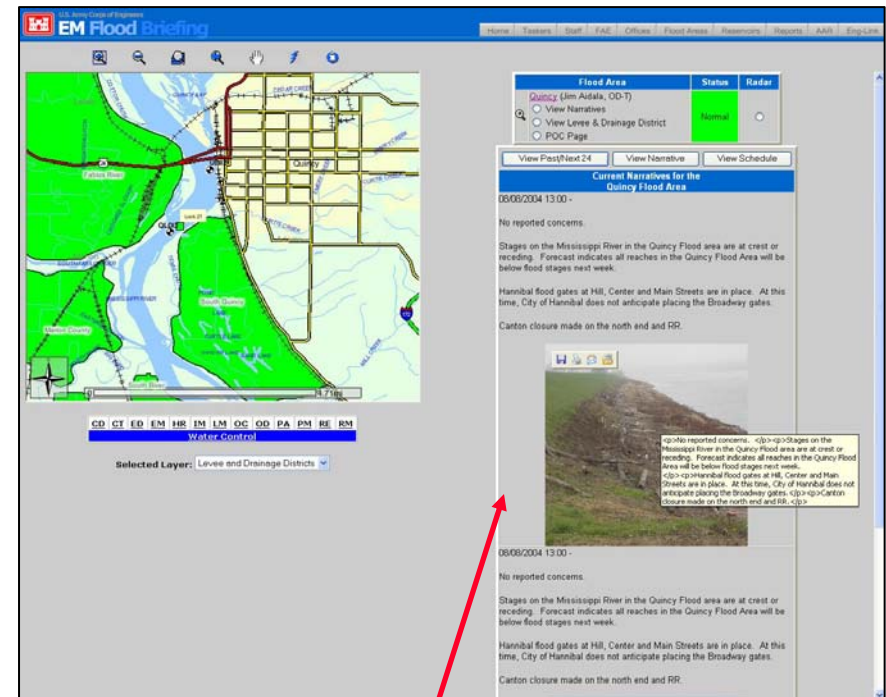
2004 Flood Event

Selected Layer: Major Lakes and Rivers

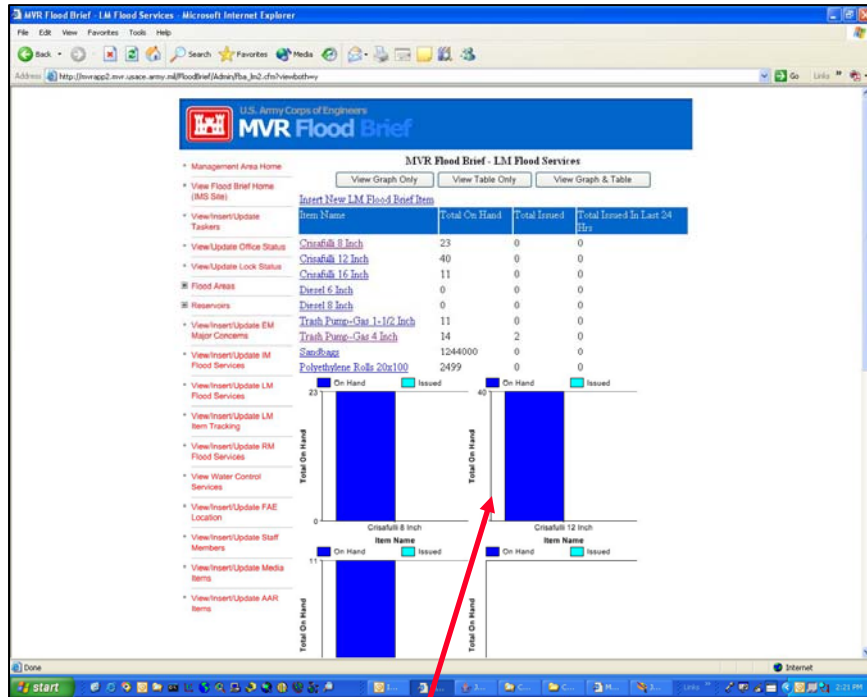
Update District Office Status On Main Briefing Page



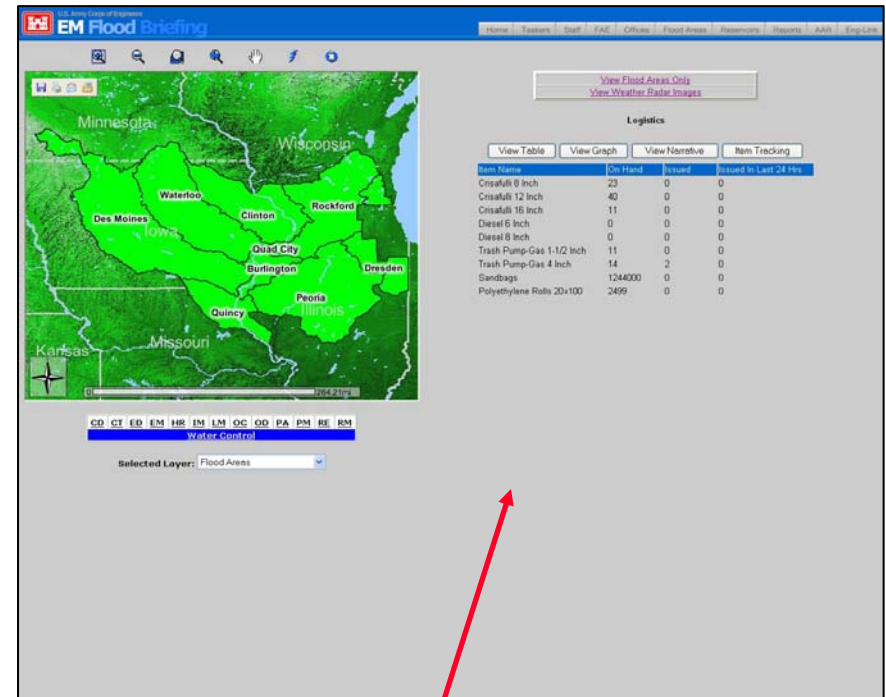
Narrative Entry Form



Narrative with Photo Displayed
On Main Briefing Page



Logistics Data Update Form

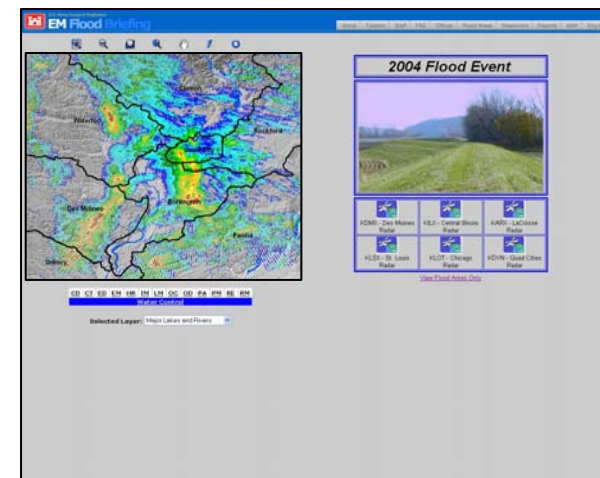
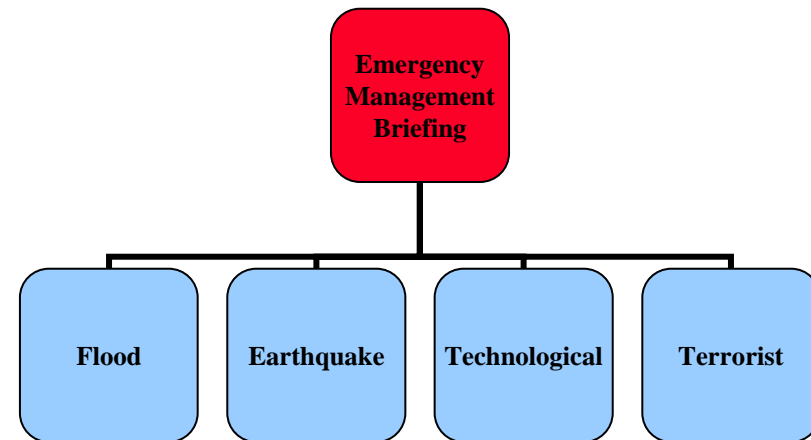


Logistics Updates Displayed
On Main Briefing Page



Future Development

- **Develop Briefing Applications for:**
 - Earthquake Events
 - Technological Events
 - Terrorist Events
- **Add Real-Time Weather Data to Map Server**
- **Update Site with Flood Exercise / Inspection Data**
- **Make Application Portable to Other Districts**





US Army Corps
of Engineers®
Mississippi Valley Division



Questions ?

U.S. Army Corps of Engineers
EM Flood Briefing

Home | Taskers | Staff | FAE | Offices | Flood Areas | Reservoirs | Reports | AAR | Eng-Link

2004 Flood Event

View Flood Areas Only

CD CT ED EM HR IM LM OC OD PA PM RE RM
Water Control

Selected Layer: Major Lakes and Rivers

One Corps Serving The Army and The Nation